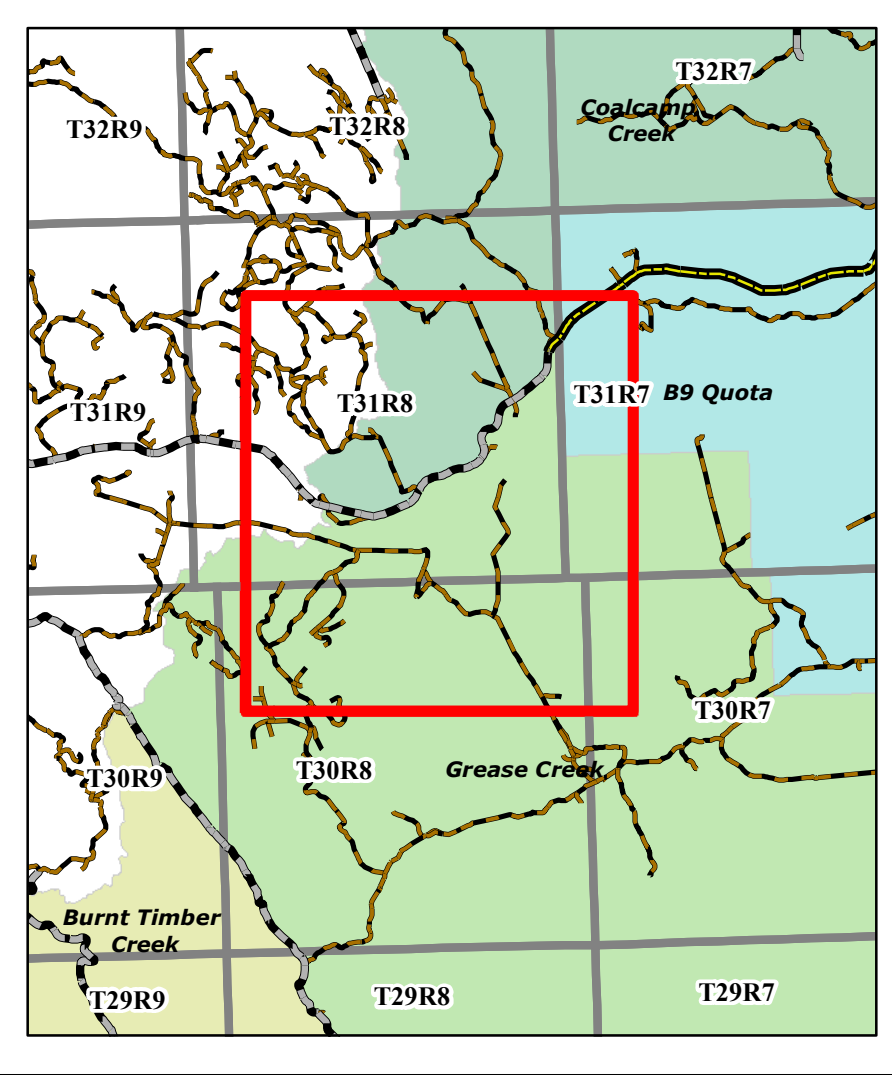
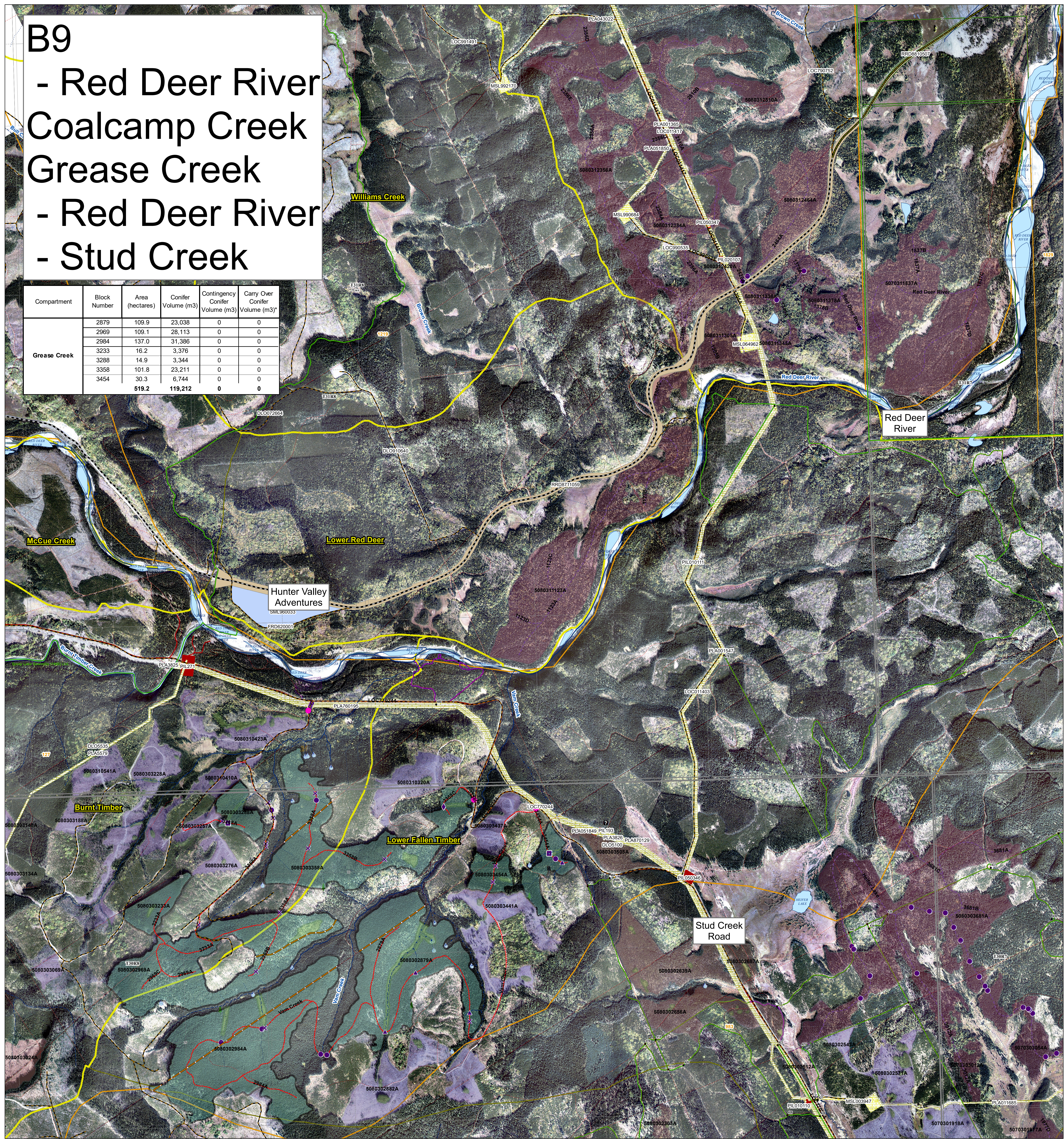


# B9

- Red Deer River  
 Coalcamp Creek  
 Grease Creek  
 - Red Deer River  
 - Stud Creek

Compartment	Block Number	Area (hectares)	Conifer Volume (m3)	Contingency Conifer Volume (m3)	Carry Over Conifer Volume (m3)*
Grease Creek	2879	109.9	23,038	0	0
	2969	109.1	28,113	0	0
	2984	137.0	31,386	0	0
	3233	16.2	3,376	0	0
	3288	14.9	3,344	0	0
	3358	101.8	23,211	0	0
	3454	30.3	6,744	0	0
	<b>519.2</b>	<b>119,212</b>	<b>0</b>	<b>0</b>	<b>0</b>



<p><b>FMA</b></p> <ul style="list-style-type: none"> <li>2016</li> <li>2017</li> <li>2023</li> <li>2026</li> <li>Retention</li> </ul> <p><b>Transportation</b></p> <ul style="list-style-type: none"> <li>Transportation</li> <li>Road - Paved</li> <li>Road - Gravel</li> <li>Truck Trail</li> <li>Cutline/Trail</li> <li>Railway</li> <li>Other Trails</li> <li>Access Control</li> </ul> <p><b>Points of Interest</b></p> <ul style="list-style-type: none"> <li>Cultural</li> <li>Grazing; Grazing</li> <li>Recreation</li> <li>Vegetation</li> <li>Water</li> <li>Wildlife</li> </ul>	<p><b>Hydrography</b></p> <ul style="list-style-type: none"> <li>Ephemeral</li> <li>Intermittent</li> <li>Small Permanent</li> <li>Large Permanent</li> </ul> <p><b>Active Crossings</b></p> <ul style="list-style-type: none"> <li>Bridge</li> <li>Box Crib</li> <li>Half Pipe</li> <li>X Drain</li> </ul> <p><b>Active In Stream</b></p> <ul style="list-style-type: none"> <li>Culvert</li> <li>Cordoury</li> <li>Logfill</li> <li>X Drain</li> </ul>	<p><b>Cutblocks</b></p> <ul style="list-style-type: none"> <li>2016</li> <li>2017</li> <li>2023</li> <li>2026</li> <li>Retention</li> </ul> <p><b>Roads</b></p> <ul style="list-style-type: none"> <li>Planned</li> <li>Laid Out</li> <li>Constructed</li> </ul> <p><b>Planned Crossings</b></p> <ul style="list-style-type: none"> <li>Bridge</li> <li>Box Crib</li> <li>Half Pipe</li> <li>X Drain</li> </ul> <p><b>Active Crossings</b></p> <ul style="list-style-type: none"> <li>Bridge</li> <li>Box Crib</li> <li>Half Pipe</li> <li>X Drain</li> </ul> <p><b>Active In Stream</b></p> <ul style="list-style-type: none"> <li>Culvert</li> <li>Cordoury</li> <li>Logfill</li> <li>X Drain</li> </ul>	<p><b>Stakeholder Landuse</b></p> <ul style="list-style-type: none"> <li>License of Occupation</li> <li>Mineral Surface Lease</li> <li>Pipeline Agreement</li> <li>Easement</li> <li>Forestry Road</li> <li>Misc. Permit</li> <li>Pipeline Installation Lease</li> <li>Parks Mineral Surface Lease</li> <li>Roadway</li> <li>Surface Material Lease</li> <li>REA Easement</li> <li>Right-of-Entry Agreement</li> <li>Country Road</li> <li>Surface Mineral Lease</li> <li>Vegetation Control Easement</li> <li>TP&amp;R Easement</li> <li>TP&amp;R License of Occupation</li> </ul>	<p><b>Provincial Rec Area</b></p> <ul style="list-style-type: none"> <li>Road Corridor</li> <li>Ecological Reserve</li> <li>Heritage Rangeland</li> <li>Public Land Recreation Area</li> <li>Provincial Park</li> <li>PNT</li> <li>Wildland Provincial Park</li> <li>Provincial Sanctuary Corridor</li> <li>Natural Area</li> <li>Public Land Recreation Area</li> <li>National Parks</li> <li>IR 2020</li> </ul>	<p><b>Grazing Allotments</b></p> <ul style="list-style-type: none"> <li>Grazing Allotments</li> <li>Traplines</li> <li>Fence Lines - Internal</li> <li>SLS PSPs - Buffers</li> <li>Gov PSPs - Buffers</li> </ul> <p><b>Designated Trails</b></p> <ul style="list-style-type: none"> <li>Shared Use Road</li> <li>Truck Trail (4x4)</li> <li>Quad</li> <li>Single Track</li> <li>Snow Vehicle Trails</li> <li>KC Trails</li> </ul>
--	--	--	---	---	---

**1:13,000**

0 0.225 0.45 0.9 1.35 1.8  
Kilometers

Map Title: B9, CC, GC (Red Deer River Area) 2023, 2026  
 Created By: Spray Lake Sawmills (1980) Ltd  
 Date Created: April 10, 2023  
 Author: Allen Mottet, RPF

Any duplication or distribution without permission is prohibited.  
 This map was created using available information and Spray Lake Sawmills (1980) Ltd makes no warranty for the accuracy or completeness of this map.