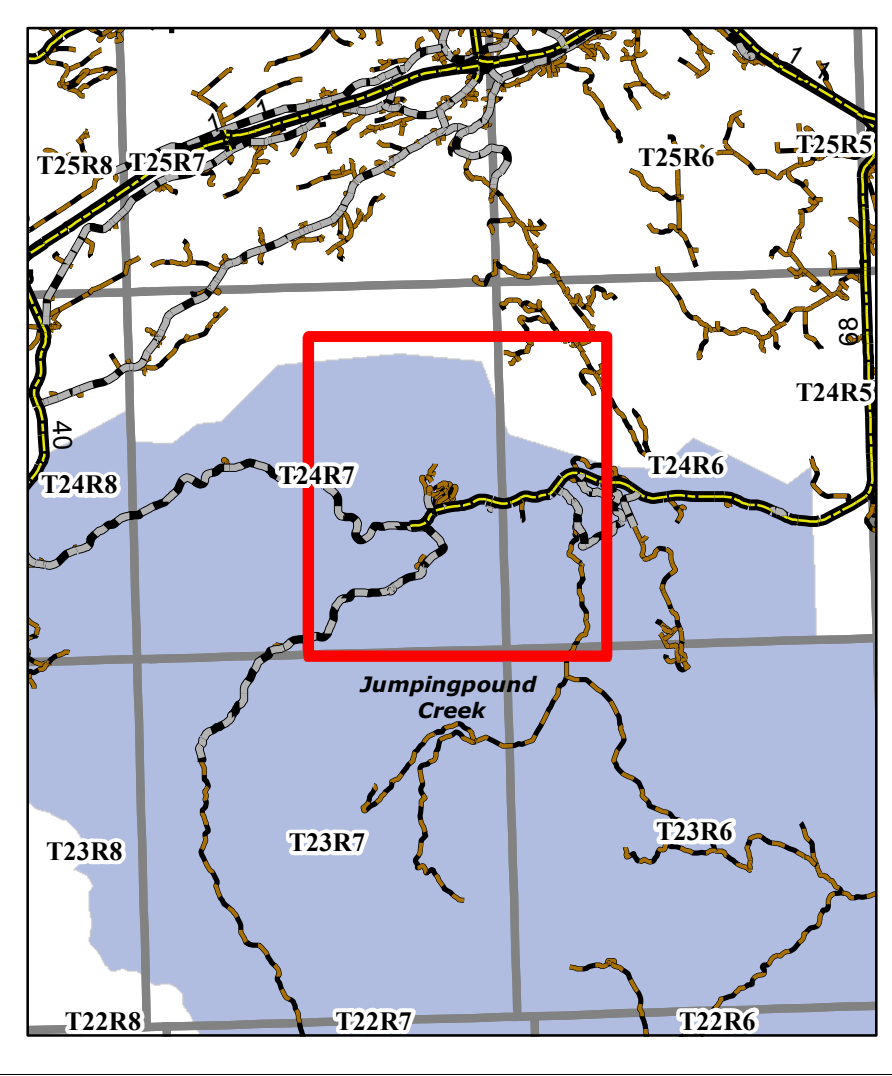
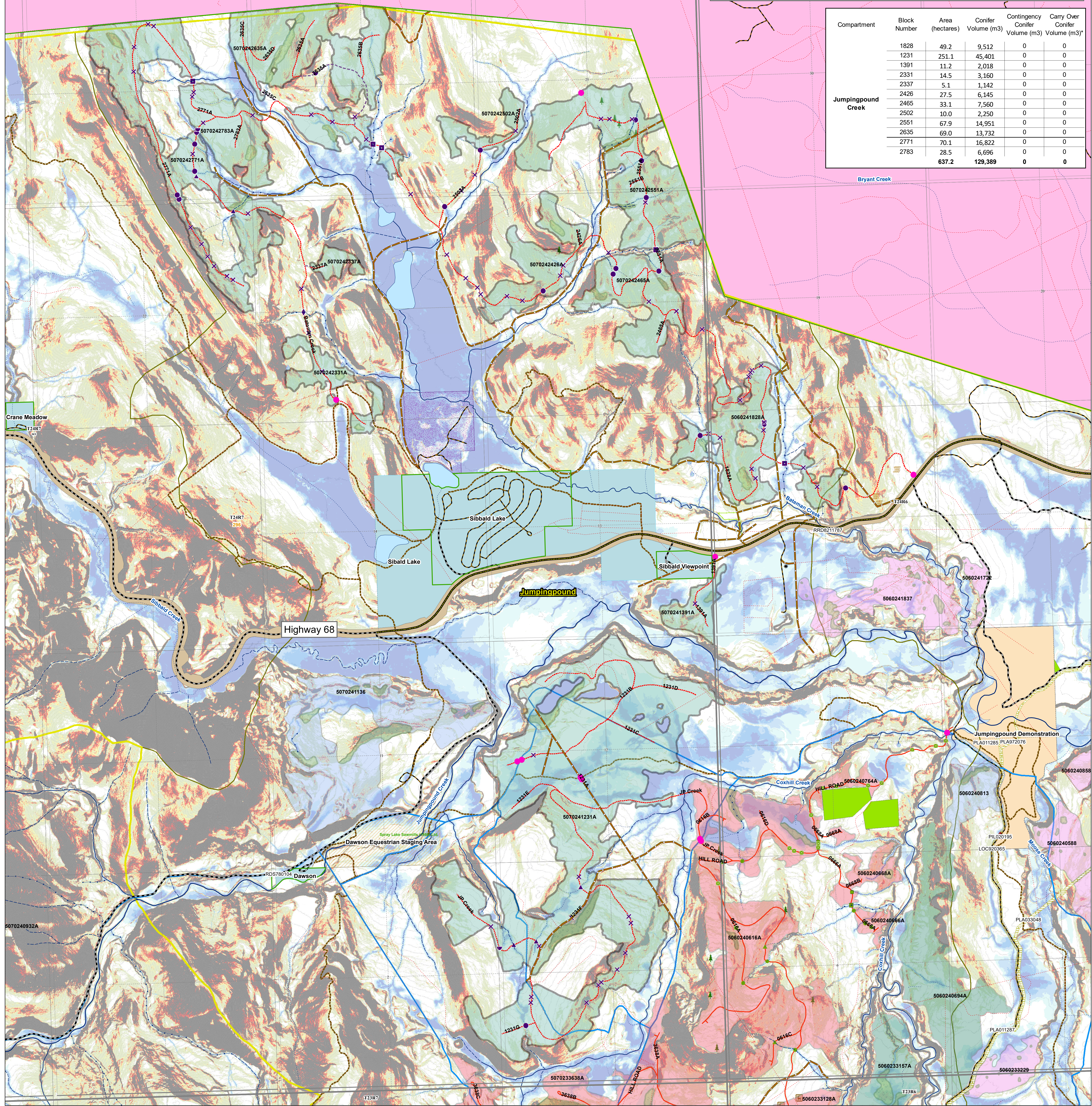


# Jumpingpound Creek

Compartment	Block Number	Area (hectares)	Conifer Volume (m3)	Contingency Conifer Volume (m3)	Carry Over Conifer Volume (m3)*
	1828	49.2	9,512	0	0
	1231	251.1	45,401	0	0
	1391	11.2	2,018	0	0
	2331	14.5	3,160	0	0
	2337	5.1	1,142	0	0
	2426	27.5	6,145	0	0
	2465	33.1	7,560	0	0
	2502	10.0	2,250	0	0
	2551	67.9	14,951	0	0
	2635	69.0	13,732	0	0
	2771	70.1	16,822	0	0
	2783	28.5	6,696	0	0
<b>Jumpingpound Creek</b>		<b>637.2</b>	<b>129,389</b>	<b>0</b>	<b>0</b>



<p><b>FMA</b></p> <ul style="list-style-type: none"> <li>2009</li> <li>2010</li> <li>2011</li> <li>2019</li> <li>2022</li> <li>2023</li> </ul> <p><b>Transportation</b></p> <ul style="list-style-type: none"> <li>Transportation</li> <li>Road - Paved</li> <li>Road - Gravel</li> <li>Truck Trail</li> <li>Cutline/Trail</li> <li>Railway</li> <li>Other Trails</li> <li>Access Control</li> </ul> <p><b>Points of Interest</b></p> <ul style="list-style-type: none"> <li>Cultural</li> <li>Grazing; Grazing</li> <li>Recreation</li> <li>Vegetation</li> <li>Water</li> <li>Wildlife</li> </ul>	<p><b>Hydrography</b></p> <ul style="list-style-type: none"> <li>Ephemeral</li> <li>Intermittent</li> <li>Transitional</li> <li>Small Permanent</li> <li>Large Permanent</li> </ul> <p><b>Planned Crossings</b></p> <ul style="list-style-type: none"> <li>Bridge</li> <li>Box Crib</li> <li>Half Pipe</li> <li>Cordoury</li> <li>Logfill</li> <li>Culvert</li> <li>X Drain</li> </ul> <p><b>Active Crossings</b></p> <ul style="list-style-type: none"> <li>Bridge</li> <li>Box Crib</li> <li>Half Pipe</li> <li>Cordoury</li> <li>Logfill</li> <li>X Drain</li> </ul>	<p><b>Cutblocks</b></p> <ul style="list-style-type: none"> <li>2009</li> <li>2010</li> <li>2011</li> <li>2019</li> <li>2022</li> <li>2023</li> </ul> <p><b>Planned In Stream</b></p> <ul style="list-style-type: none"> <li>Cordoury</li> <li>Logfill</li> <li>Culvert</li> <li>X Drain</li> </ul> <p><b>Active Crossings</b></p> <ul style="list-style-type: none"> <li>Bridge</li> <li>Box Crib</li> <li>Half Pipe</li> <li>Cordoury</li> <li>Logfill</li> <li>X Drain</li> </ul>	<p><b>Stakeholder Landuse</b></p> <ul style="list-style-type: none"> <li>License of Occupation</li> <li>Mineral Surface Lease</li> <li>Pipeline Agreement</li> <li>Easement</li> <li>Forestry Road</li> <li>Misc. Permit</li> <li>Pipeline Installation Lease</li> <li>Parks Mineral Surface Lease</li> <li>Roadway</li> <li>REA Easement</li> <li>Right-of-Entry Agreement</li> <li>Country Road</li> <li>Surface Mineral Lease</li> <li>Vegetation Control Easement</li> <li>TP&amp;R Easement</li> <li>TP&amp;R License of Occupation</li> </ul>	<p><b>Planned Crossings</b></p> <ul style="list-style-type: none"> <li>Bridge</li> <li>Box Crib</li> <li>Half Pipe</li> <li>Cordoury</li> <li>Logfill</li> <li>Culvert</li> <li>X Drain</li> </ul>	<p><b>Stakeholder Landuse</b></p> <ul style="list-style-type: none"> <li>Provincial Rec Area</li> <li>Road Corridor</li> <li>Ecological Reserve</li> <li>Heritage Rangeland</li> <li>Public Land Recreation Area</li> <li>Provincial Park</li> <li>PNT</li> <li>Wildland Provincial Park</li> <li>Provincial Sanctuary Corridor</li> <li>Natural Area</li> <li>Public Land Recreation Area</li> <li>National Parks</li> <li>IR 2020</li> </ul>	<p><b>Designated Trails</b></p> <ul style="list-style-type: none"> <li>Grazing Allotments</li> <li>Grazing Leases</li> <li>Traplines</li> <li>Fence Lines - Internal</li> <li>SLS PSPs - Buffers</li> <li>Gov PSPs - Buffers</li> <li>Shared Use Road</li> <li>Truck Trail (4x4)</li> <li>Quad</li> <li>Single Track</li> <li>Snow Vehicle Trails</li> <li>KC Trails</li> </ul>
---	---	---	---	--	--	---

1:10,000

Kilometers

Map Title: Jumpingpound 2023  
 Created By: Spray Lake Sawmills (1980) Ltd  
 Date Created: April 10, 2023  
 Author: Allen Mottet, RPF

Any duplication or distribution without permission is prohibited. This map was created using available information and Spray Lake Sawmills (1980) Ltd makes no warranty for the accuracy or completeness of this map.