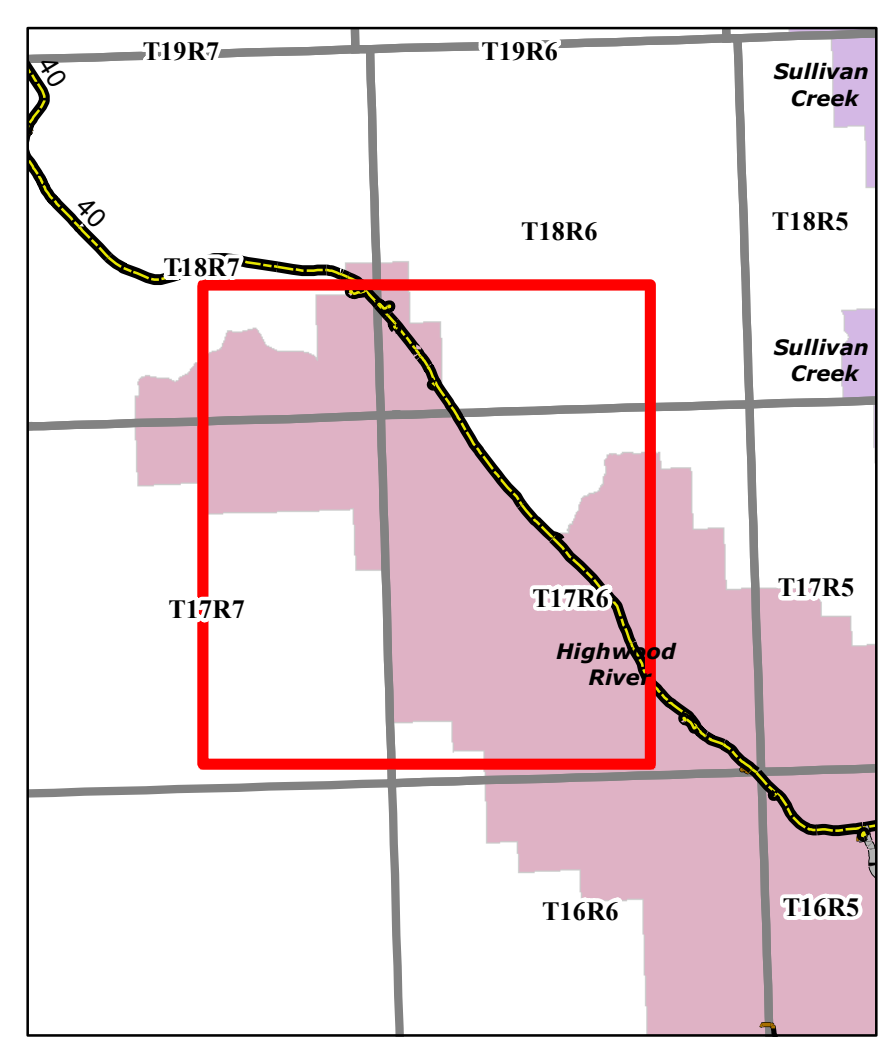
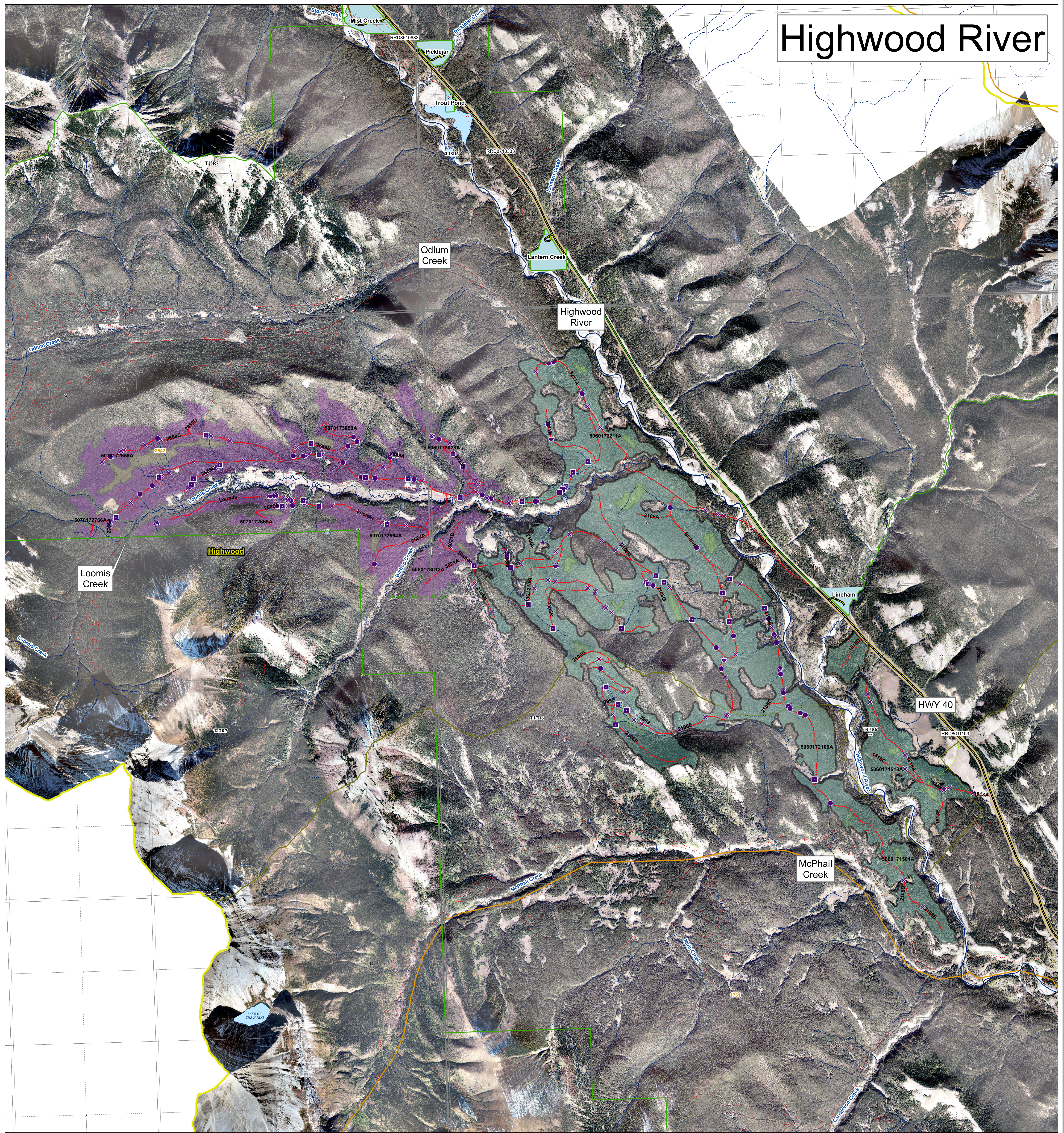


# Highwood River



<b>FMA</b> 2023 2024 <b>Transportation</b> - Transportation - Road - Paved - Road - Gravel - Truck Trail - Outline/Trail - Railway - Other Trails - Access Control	<b>Hydrography</b> - Ephemeral - Intermittent - Transitional - Small Permanent - Large Permanent <b>Points of Interest</b> - Cultural - Grazing; Grazing - Recreation - Vegetation - Water - Wildlife	<b>Cutblocks</b> - 2023 - 2024 <b>Retentions</b> - Planned - Laid Out - Constructed <b>Roads</b> - Planned - Laid Out - Constructed	<b>Planned Crossings</b> - Bridge - Box Crib - Half Pipe <b>Planned In Stream</b> - Cordoury - Logfill - Culvert - X Drain <b>Active Crossings</b> - Bridge - Box Crib - Half Pipe <b>Active In Stream</b> - Culvert - Cordoury - Logfill - X Drain	<b>Stakeholder Landuse</b> - License of Occupation - Mineral Surface Lease - Pipeline Agreement - Easement - Forestry Road - Misc. Permit - Pipeline Installation Lease - Parks Mineral Surface Lease - Roadway - Surface Material Lease - REA Easement - Right-of-Entry Agreement - Country Road - Surface Mineral Lease - Vegetation Control Easement - TP&R Easement - TP&R License of Occupation	- Provincial Rec Area - Road Corridor - Ecological Reserve - Heritage Rangeland - Public Land Recreation Area - Provincial Park - PNT - Wildland Provincial Park - Provincial Sanctuary Corridor - Natural Area - Public Land Recreation Area - National Parks - IR 2020	- Grazing Allotments - Grazing Leases - Traplines - Fence Lines - Internal - SLS PSPs - Buffers - Gov PSPs - Buffers <b>Designated Trails</b> - Shared Use Road - Truck Trail (4x4) - Quad - Single Track - Snow Vehicle Trails - KC Trails
---	---	---	--	---	--	---

