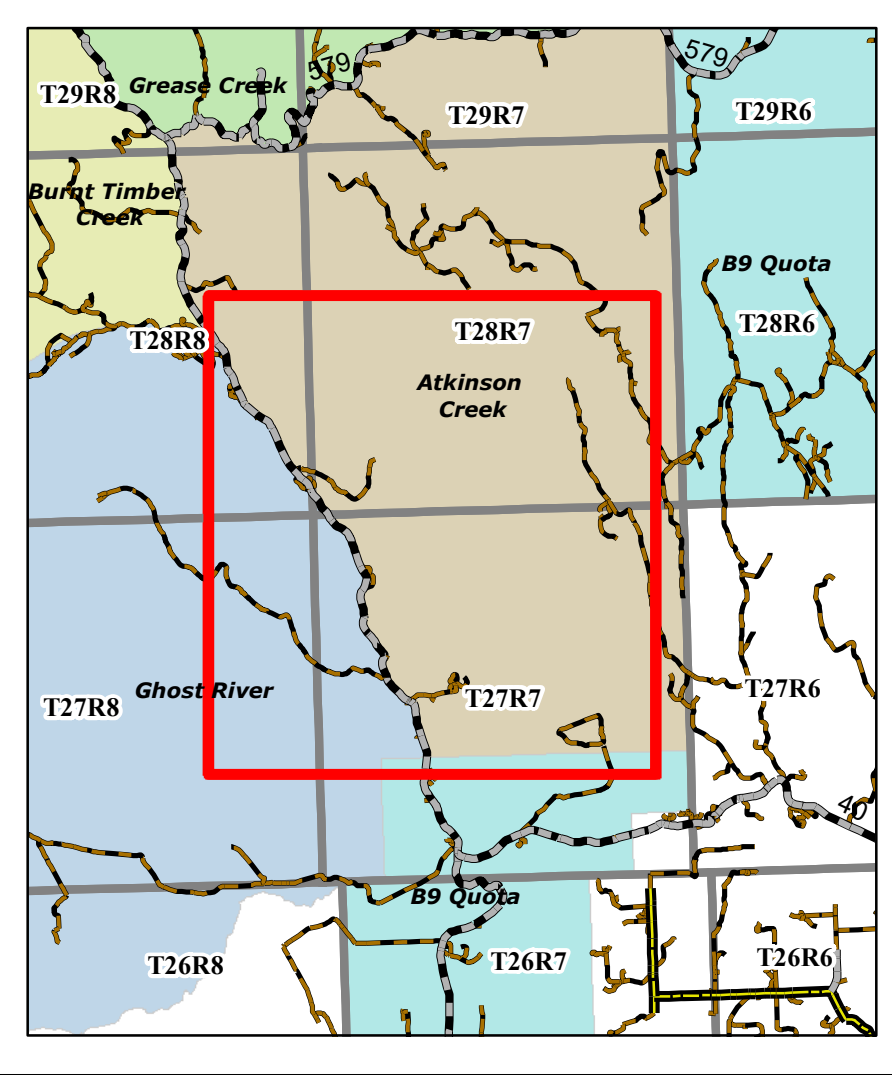
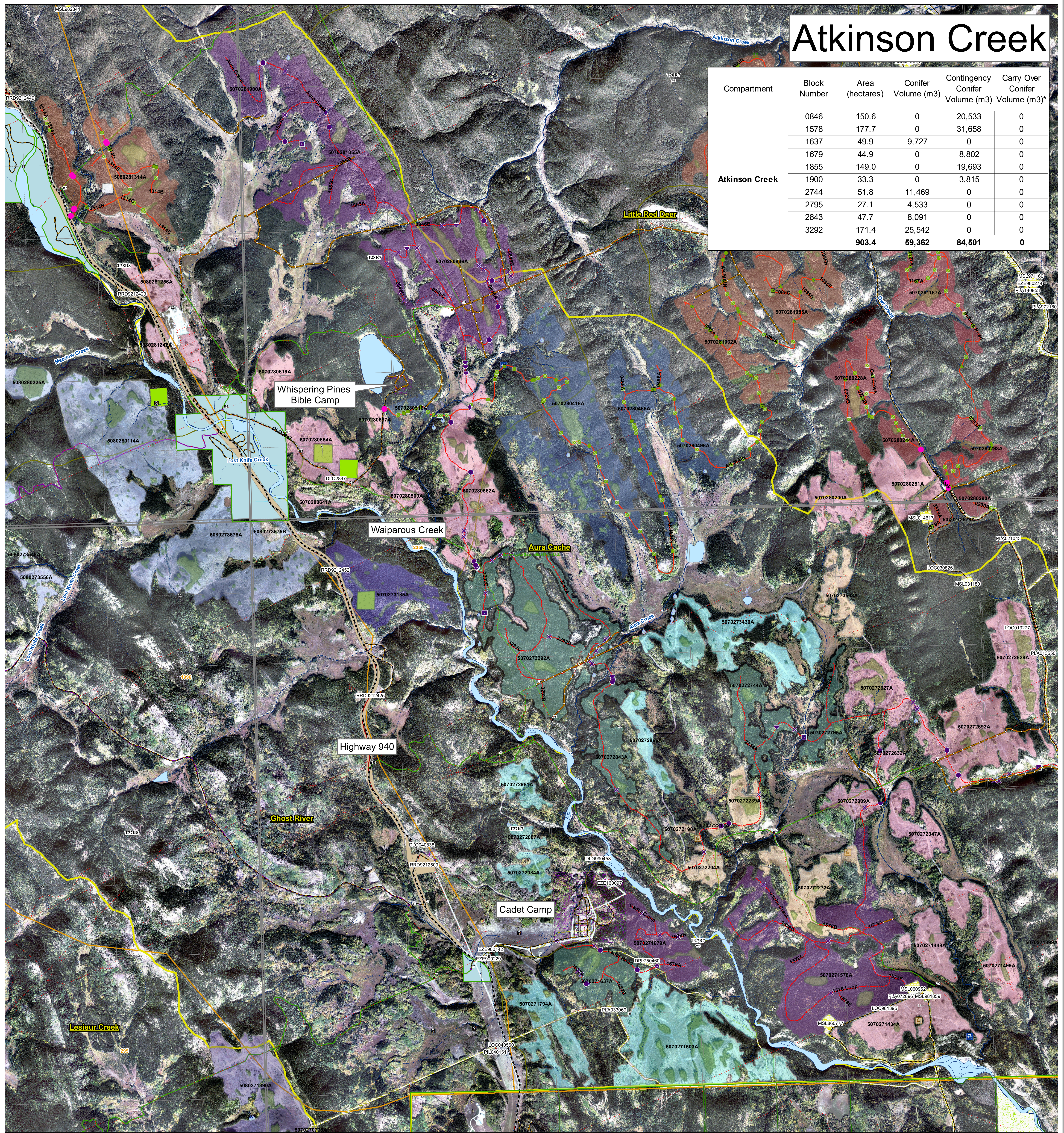


# Atkinson Creek

Compartment	Block Number	Area (hectares)	Conifer Volume (m3)	Contingency Conifer Volume (m3)	Carry Over Conifer Volume (m3)*
	0846	150.6	0	20,533	0
	1578	177.7	0	31,658	0
	1637	49.9	9,727	0	0
	1679	44.9	0	8,802	0
	1855	149.0	0	19,693	0
<b>Atkinson Creek</b>	1900	33.3	0	3,815	0
	2744	51.8	11,469	0	0
	2795	27.1	4,533	0	0
	2843	47.7	8,091	0	0
	3292	171.4	25,542	0	0
		<b>903.4</b>	<b>59,362</b>	<b>84,501</b>	<b>0</b>



<p><b>FMA</b></p> <ul style="list-style-type: none"> <li>— FMA</li> </ul> <p><b>Transportation</b></p> <ul style="list-style-type: none"> <li>— Transportation</li> <li>— Road - Paved</li> <li>— Road - Gravel</li> <li>— Truck Trail</li> <li>— Cutline/Trail</li> <li>— Railway</li> <li>— Other Trails</li> <li>● Access Control</li> </ul> <p><b>Points of Interest</b></p> <ul style="list-style-type: none"> <li>— Cultural</li> <li>— Grazing; Grazing</li> <li>— Recreation</li> <li>— Vegetation</li> <li>— Water</li> <li>— Wildlife</li> </ul>	<p><b>Hydrography</b></p> <ul style="list-style-type: none"> <li>— Hydrography</li> <li>— Ephemeral</li> <li>— Intermittent</li> <li>— Small Permanent</li> <li>— Large Permanent</li> </ul> <p><b>Points of Interest</b></p> <ul style="list-style-type: none"> <li>— Cultural</li> <li>— Grazing; Grazing</li> <li>— Recreation</li> <li>— Vegetation</li> <li>— Water</li> <li>— Wildlife</li> </ul>	<p><b>Cutblocks</b></p> <ul style="list-style-type: none"> <li>2010</li> <li>2013</li> <li>2014</li> <li>2015</li> <li>2016</li> <li>2019</li> <li>2020</li> <li>2021</li> <li>2022</li> <li>2023</li> <li>2024</li> </ul> <p><b>Roads</b></p> <ul style="list-style-type: none"> <li>— Planned</li> <li>— Laid Out</li> <li>— Constructed</li> </ul>	<p><b>Planned Crossings</b></p> <ul style="list-style-type: none"> <li>— Bridge</li> <li>— Box Crib</li> <li>— Half Pipe</li> </ul> <p><b>Planned In Stream</b></p> <ul style="list-style-type: none"> <li>— Cordoury</li> <li>— Logfill</li> <li>— Culvert</li> <li>— X Drain</li> </ul> <p><b>Active Crossings</b></p> <ul style="list-style-type: none"> <li>— Bridge</li> <li>— Box Crib</li> <li>— Half Pipe</li> <li>— Cordoury</li> <li>— Logfill</li> <li>— X Drain</li> </ul>	<p><b>Stakeholder Landuse</b></p> <ul style="list-style-type: none"> <li>— License of Occupation</li> <li>— Mineral Surface Lease</li> <li>— Pipeline Agreement</li> <li>— Easement</li> <li>— Forestry Road</li> <li>— Misc. Permit</li> <li>— Pipeline Installation Lease</li> <li>— Parks Mineral Surface Lease</li> <li>— Roadway</li> <li>— Surface Material Lease</li> <li>— REA Easement</li> <li>— Right-of-Entry Agreement</li> <li>— Country Road</li> <li>— Surface Mineral Lease</li> <li>— Vegetation Control Easement</li> <li>— TP&amp;R Easement</li> <li>— TP&amp;R License of Occupation</li> </ul>	<p><b>Provincial Rec Area</b></p> <ul style="list-style-type: none"> <li>— Road Corridor</li> <li>— Ecological Reserve</li> <li>— Heritage Rangeland</li> <li>— Public Land Recreation Area</li> <li>— Provincial Park</li> <li>— PNT</li> <li>— Wildland Provincial Park</li> <li>— Provincial Sanctuary Corridor</li> <li>— Natural Area</li> <li>— Public Land Recreation Area</li> <li>— National Parks</li> <li>— IR 2020</li> </ul>	<p><b>Grazing Allotments</b></p> <ul style="list-style-type: none"> <li>— Grazing Allotments</li> <li>— Grazing Leases</li> <li>— Traplines</li> <li>— Fence Lines - Internal</li> <li>— SLS PSPs - Buffers</li> <li>— Gov PSPs - Buffers</li> </ul> <p><b>Designated Trails</b></p> <ul style="list-style-type: none"> <li>— Shared Use Road</li> <li>— Truck Trail (4x4)</li> <li>— Quad</li> <li>— Single Track</li> <li>— Snow Vehicle Trails</li> <li>— KC Trails</li> </ul>
--	---	---	--	---	---	---

**1:15,000**

0 0.275 0.55 1.1 1.65 2.2  
Kilometers

Map Title: Atkinson 2023/24  
 Created By: Spray Lake Sawmills (1980) Ltd  
 Date Created: April 10, 2023  
 Author: Allen Mottet, RPF

Any duplication or distribution without permission is prohibited. This map was created using available information and Spray Lake Sawmills (1980) Ltd makes no warranty for the accuracy or completeness of this map.