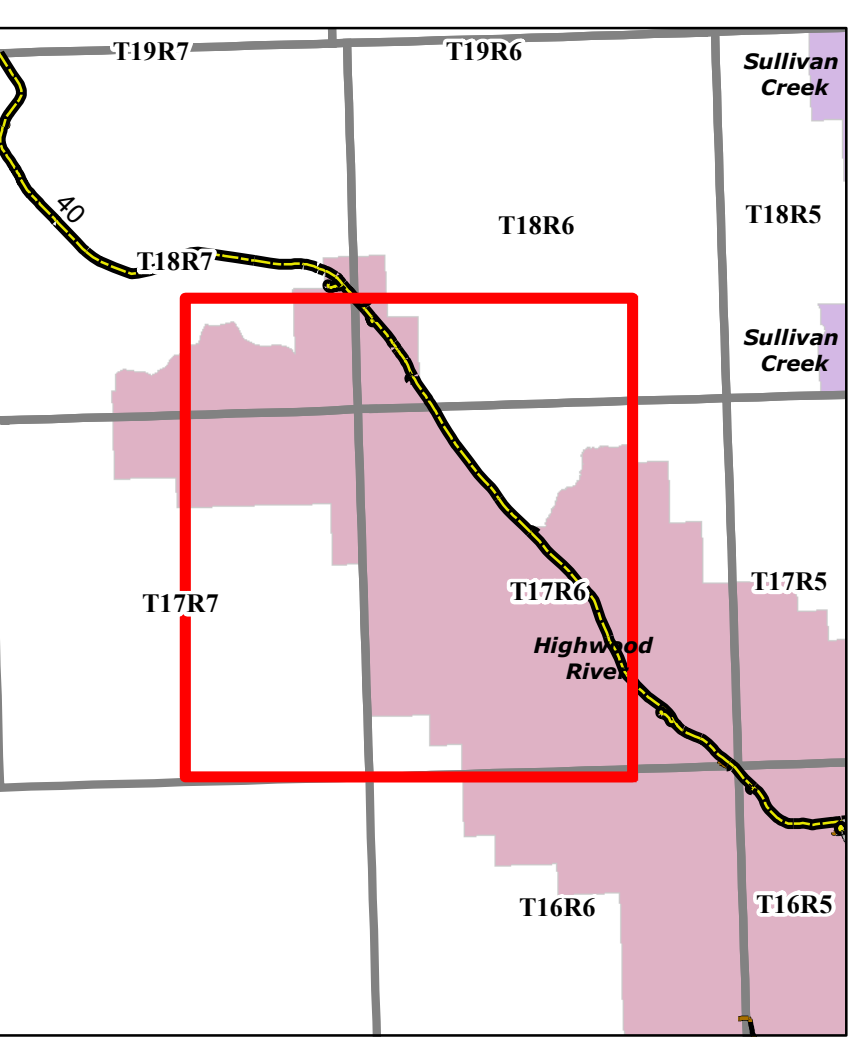
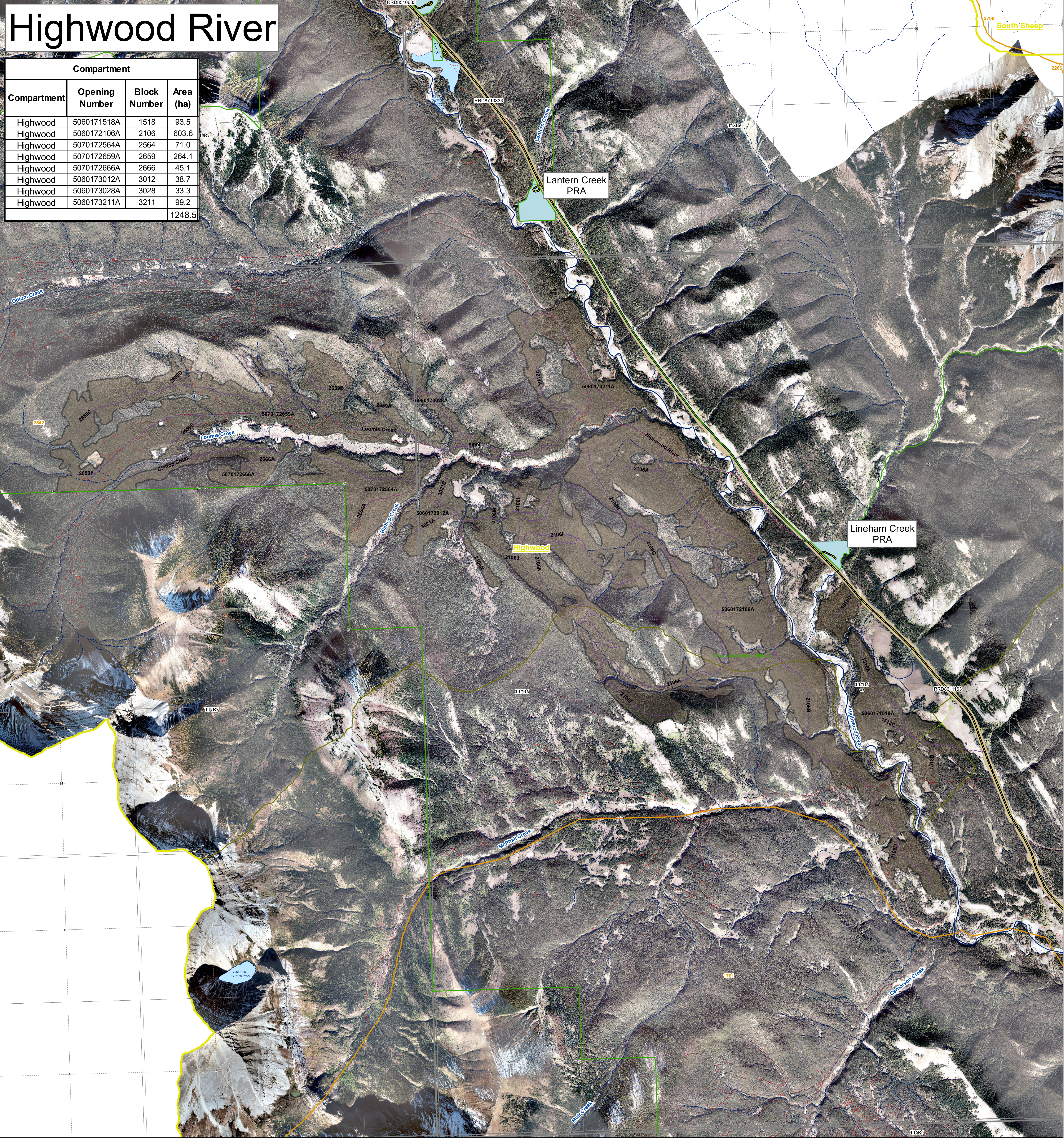


# Highwood River

Compartment			
Compartment	Opening Number	Block Number	Area (ha)
Highwood	5060171518A	1518	93.5
Highwood	5060172106A	2106	603.6
Highwood	5070172564A	2564	71.0
Highwood	5070172659A	2659	264.1
Highwood	5070172666A	2666	45.1
Highwood	5060173012A	3012	38.7
Highwood	5060173028A	3028	33.3
Highwood	5060173211A	3211	99.2
			1248.5



<p><b>FMA</b></p> <ul style="list-style-type: none"> <li>2023</li> </ul> <p><b>Transportation</b></p> <ul style="list-style-type: none"> <li>Transportation</li> <li>Road - Paved</li> <li>Road - Gravel</li> <li>Truck Trail</li> <li>Cutline/Trail</li> <li>Railway</li> <li>Other Trails</li> </ul> <p><b>Points of Interest</b></p> <ul style="list-style-type: none"> <li>Cultural</li> <li>Grazing; Grazing</li> <li>Recreation</li> <li>Vegetation</li> <li>Water</li> <li>Wildlife</li> </ul> <p><b>Variance &gt;2ha</b></p> <ul style="list-style-type: none"> <li>Additions</li> <li>Deletions</li> <li>Deletions</li> </ul>	<p><b>Hydrography</b></p> <ul style="list-style-type: none"> <li>Ephemeral</li> <li>Intermittent</li> <li>Transitional</li> <li>Small Permanent</li> <li>Large Permanent</li> </ul>	<p><b>Cutblocks</b></p> <ul style="list-style-type: none"> <li>2023</li> <li>Retention</li> </ul> <p><b>Roads</b></p> <ul style="list-style-type: none"> <li>Planned</li> <li>Laid Out</li> <li>Constructed</li> <li>Reclaimed - Total</li> <li>Reclaimed - Partial</li> <li>Reclaimed - Seasonal</li> </ul>	<p><b>Planned Crossings</b></p> <ul style="list-style-type: none"> <li>Bridge</li> <li>Box Crib</li> <li>Half Pipe</li> </ul> <p><b>Active In Stream</b></p> <ul style="list-style-type: none"> <li>Cordoury</li> <li>Logfill</li> <li>Culvert</li> <li>X Drain</li> </ul> <p><b>Active Crossings</b></p> <ul style="list-style-type: none"> <li>Bridge</li> <li>Box Crib</li> <li>Half Pipe</li> <li>X Drain</li> </ul>	<p><b>Stakeholder Landuse</b></p> <ul style="list-style-type: none"> <li>License of Occupation</li> <li>Mineral Surface Lease</li> <li>Pipeline Agreement</li> <li>Easement</li> <li>Forestry Road</li> <li>Misc. Permit</li> <li>Pipeline Installation Lease</li> <li>Parks Mineral Surface Lease</li> <li>Roadway</li> <li>REA Easement</li> <li>Right-of-Entry Agreement</li> <li>Country Road</li> <li>Surface Mineral Lease</li> <li>Vegetation Control Easement</li> <li>TP&amp;R Easement</li> <li>TP&amp;R License of Occupation</li> </ul>	<p><b>Landuse</b></p> <ul style="list-style-type: none"> <li>Provincial Rec Area</li> <li>Road Corridor</li> <li>Ecological Reserve</li> <li>Heritage Rangeland</li> <li>Public Land Recreation Area</li> <li>Provincial Park</li> <li>PNT</li> <li>Wildland Provincial Park</li> <li>Provincial Sanctuary Corridor</li> <li>Natural Area</li> <li>Public Land Recreation Area</li> <li>National Parks</li> <li>IR 2020</li> </ul>	<p><b>Designated Trails</b></p> <ul style="list-style-type: none"> <li>Grazing Allotments</li> <li>Grazing Leases</li> <li>Traplines</li> <li>Fence Lines - Internal</li> <li>SLS PSPs - Buffers</li> <li>Gov PSPs - Buffers</li> <li>Shared Use Road</li> <li>Truck Trail (4x4)</li> <li>Quad</li> <li>Single Track</li> <li>Snow Vehicle Trails</li> <li>KC Trails</li> </ul>
--	---	--	--	---	--	---

1:15,000

0 0.275 0.55 1.1 1.65 2.2 Kilometers

Map Title: Prelim\_Highwood  
 Created By: Spray Lake Sawmills (1980) Ltd  
 Date Created: March 10, 2022  
 Author: Allen Mottet, RPF

Any duplication or distribution without permission is prohibited. This map was created using available information and Spray Lake Sawmills (1980) Ltd makes no warranty for the accuracy or completeness of this map.