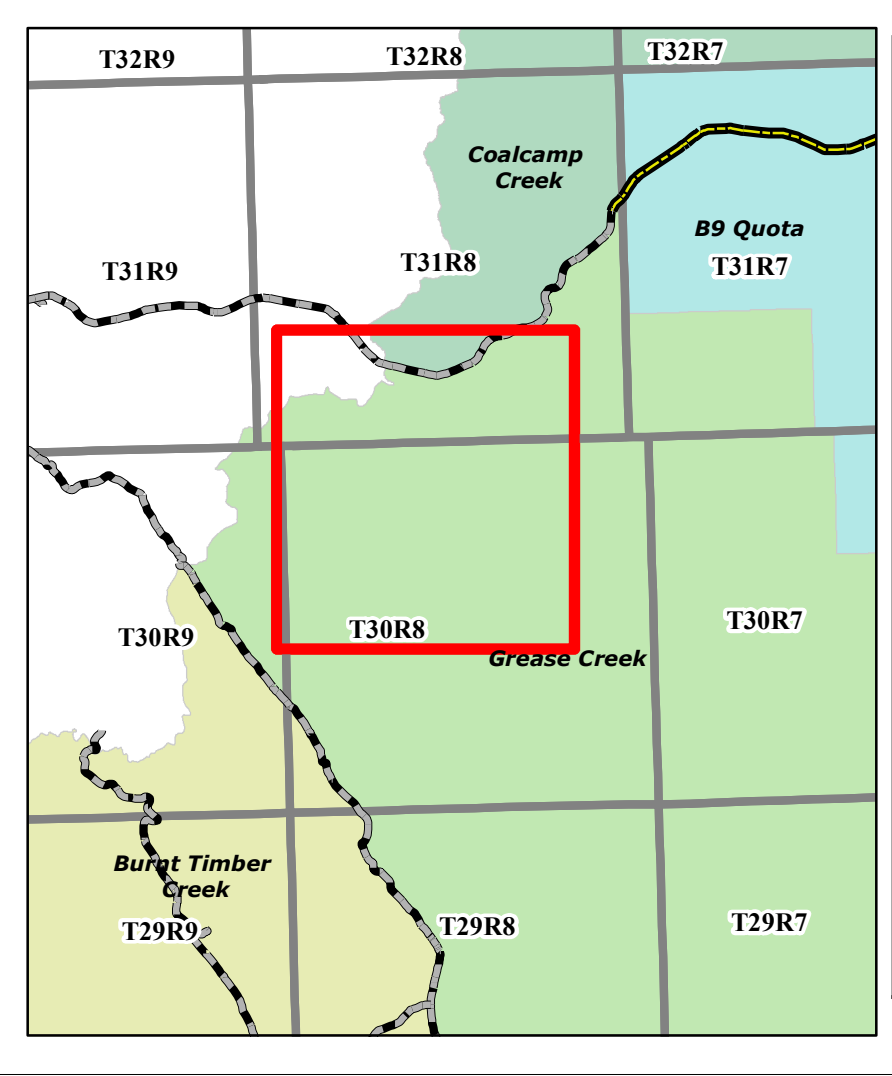
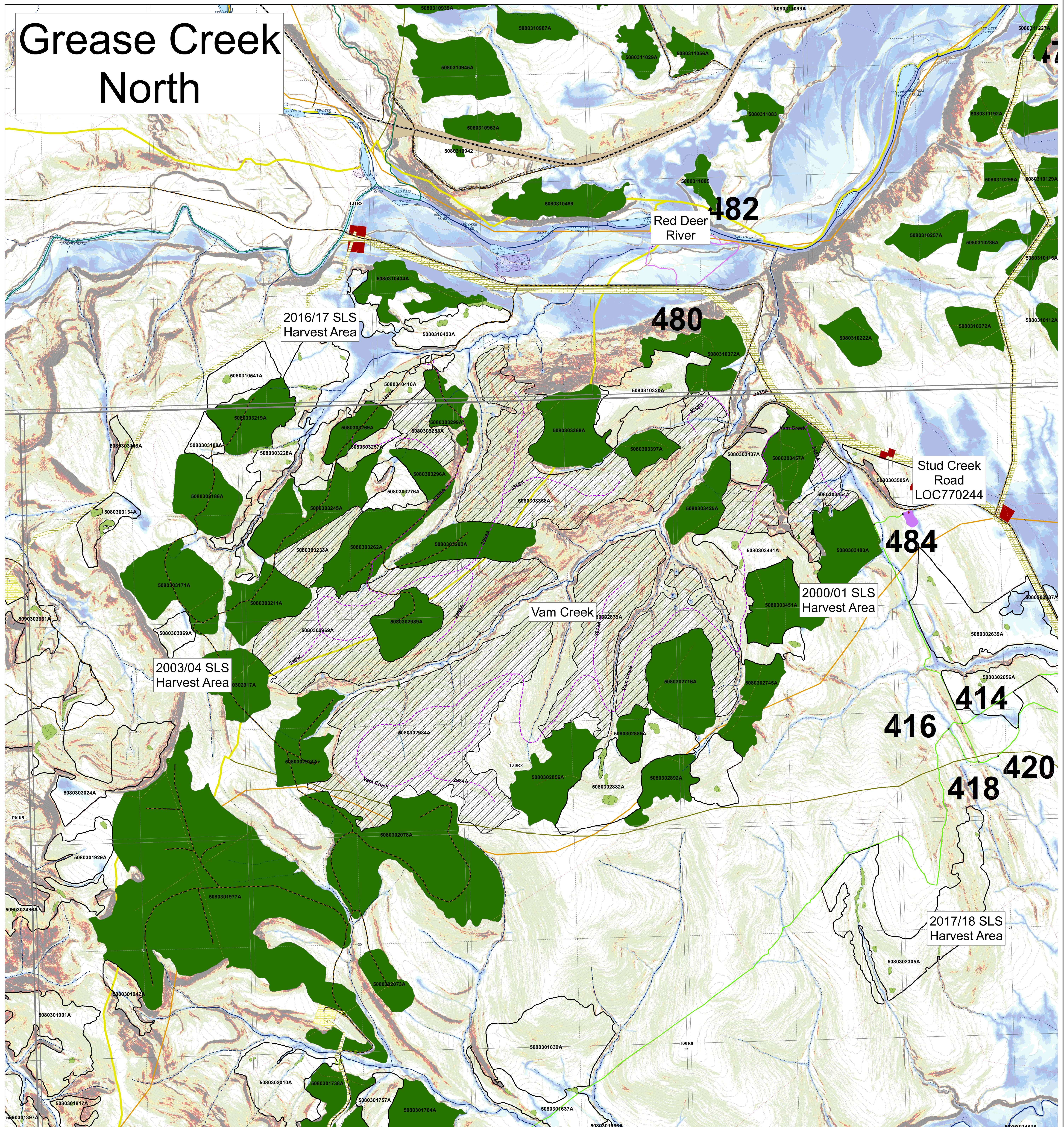


# Grease Creek North



<p><b>FMA &amp; B9</b></p> <ul style="list-style-type: none"> <li>FMA &amp; B9</li> </ul> <p><b>Transportation</b></p> <ul style="list-style-type: none"> <li>Transportation</li> <li>Road - Paved</li> <li>Road - Gravel</li> <li>Truck Trail</li> <li>Cutline/Trail</li> <li>Railway</li> <li>Other Trails</li> </ul>	<p><b>Hydrography</b></p> <ul style="list-style-type: none"> <li>Hydrography</li> <li>Ephemeral</li> <li>Intermittent</li> <li>Transitional</li> <li>Small Permanent</li> <li>Large Permanent</li> </ul> <p><b>Points of Interest</b></p> <ul style="list-style-type: none"> <li>Cultural</li> <li>Grazing; Grazing</li> <li>Recreation</li> <li>Vegetation</li> <li>Water</li> <li>Wildlife</li> </ul>	<p><b>Cutblocks</b></p> <ul style="list-style-type: none"> <li>Harvested, Complete</li> <li>In Progress</li> <li>Laid Out</li> <li>Preliminary</li> <li>Reforested</li> <li>Retention</li> </ul> <p><b>Roads</b></p> <ul style="list-style-type: none"> <li>Planned</li> <li>Laid Out</li> <li>Constructed</li> <li>Reclaimed - Total</li> <li>Reclaimed - Partial</li> <li>Reclaimed - Seasonal</li> </ul>	<p><b>Planned Watercourse Crossings</b></p> <ul style="list-style-type: none"> <li>Bridge</li> <li>Box Crib</li> <li>Half Pipe</li> </ul> <p><b>Active Watercourse Crossings</b></p> <ul style="list-style-type: none"> <li>Bridge</li> <li>Box Crib</li> <li>Half Pipe</li> <li>Culvert</li> <li>Cordoury</li> <li>Logfill</li> <li>X Drain</li> </ul>	<p><b>Stakeholder Landuse</b></p> <ul style="list-style-type: none"> <li>License of Occupation</li> <li>Mineral Surface Lease</li> <li>Pipeline Agreement</li> <li>Easement</li> <li>Forestry Road</li> <li>Misc. Permit</li> <li>Pipeline Installation Lease</li> <li>Parks Mineral Surface Lease</li> </ul>	<ul style="list-style-type: none"> <li>Roadway</li> <li>Surface Material Lease</li> <li>Rural Electrification Association Easement</li> <li>Right-of-Entry Agreement</li> <li>Country Road</li> <li>Surface Mineral Lease</li> <li>Vegetation Control Easement</li> <li>TP&amp;R Easement</li> <li>TP&amp;R License of Occupation</li> <li>Grazing Allotments</li> <li>Grazing Leases</li> <li>Traplines</li> <li>Fence Lines - Internal</li> <li>SLS PSPs - Buffers</li> <li>Gov PSPs - Buffers</li> </ul>	<p><b>Parks and Reserves</b></p> <ul style="list-style-type: none"> <li>Provincial Rec Area</li> <li>PNT</li> <li>Heritage Rangeland</li> <li>Ecological Reserve</li> <li>Natural Area</li> <li>Wilderness Area</li> <li>Wildland Provincial Park</li> <li>National Park</li> </ul> <p><b>Designated Trails</b></p> <ul style="list-style-type: none"> <li>Truck Trail (4x4)</li> <li>Quad</li> <li>Single Track</li> <li>KC Trails</li> </ul>
---	---	---	---	---	---	--

1:10,000

0 0.175 0.35 0.7 1.05 1.4  
Kilometers

Map Title: 2021\_Open\_House  
 Created By: Spray Lake Sawmills (1980) Ltd  
 Date Created: April 20, 2021  
 Author: Allen Mottet, RPF

Any duplication or distribution without permission is prohibited.  
 This map was created using available information and Spray Lake Sawmills (1980) Ltd makes no warranty for the accuracy or completeness of this map.