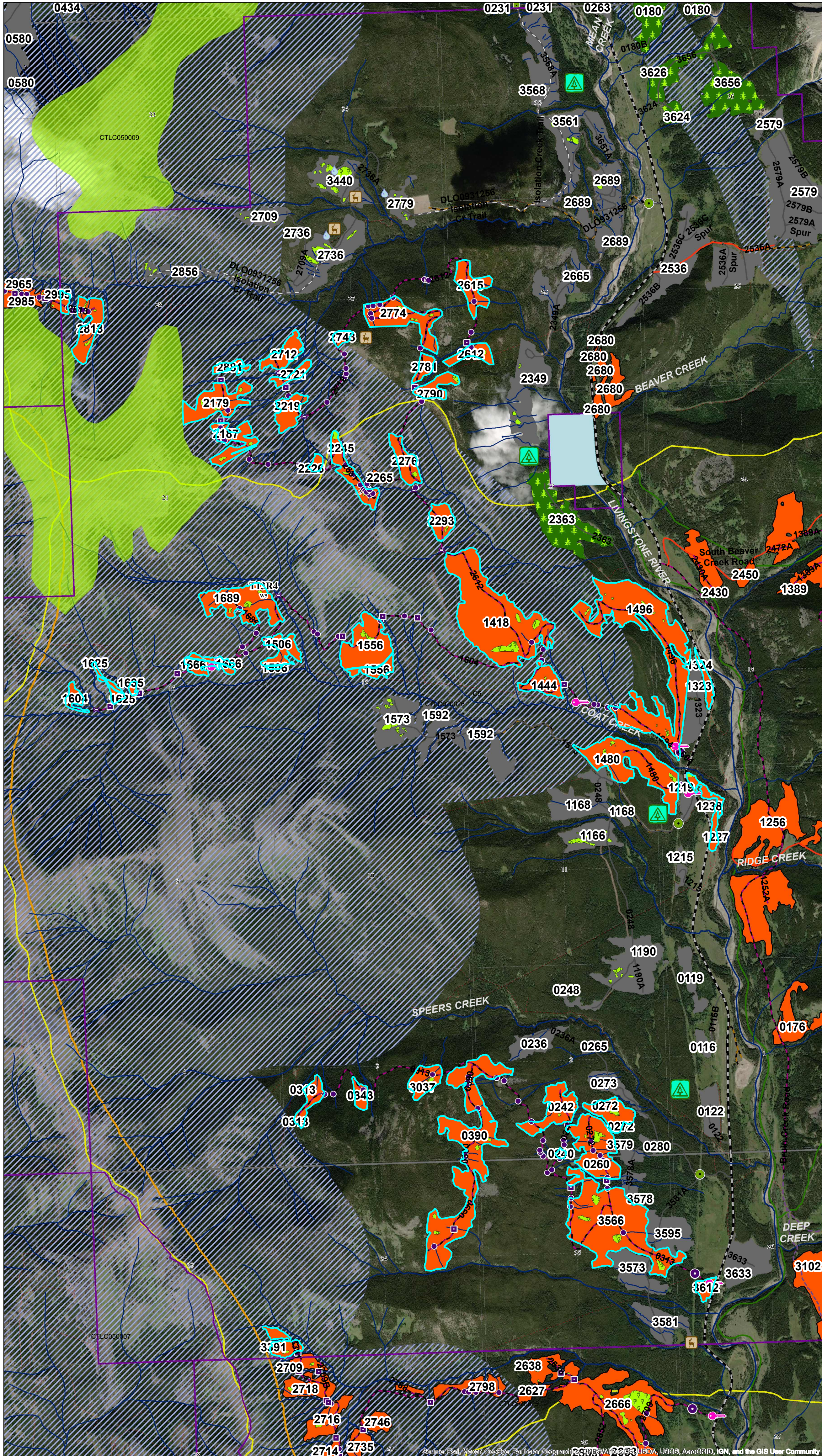




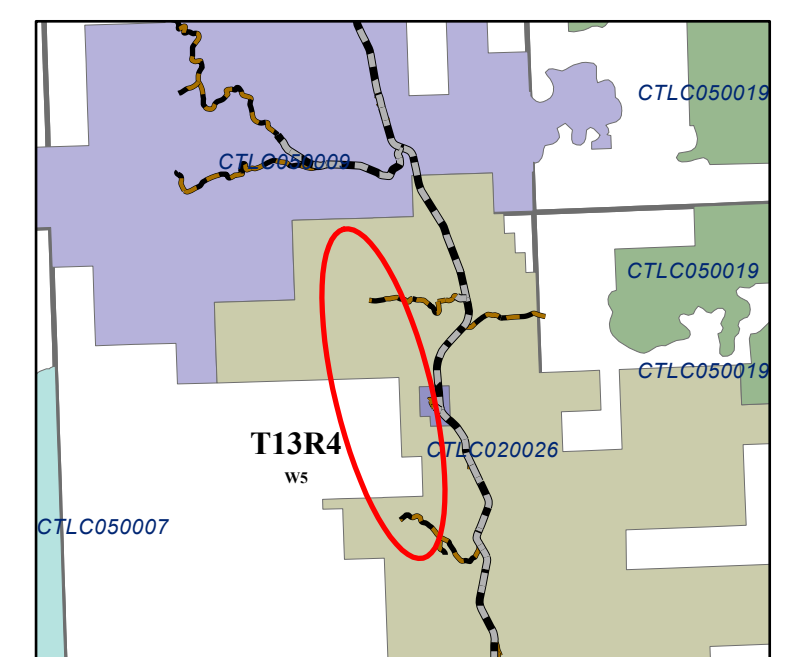
Spray Lake Sawmills

CTLC020026 Upper Livingstone - WEST Planned Harvest 2022 - 2023



Legend

- Transportation**
 - Road - Paved
 - Road - Gravel
 - Truck Trail
 - Cutline/Trail
- SLS Roads**
 - Laid Out
 - Constructed
 - Reclaimed - Total
- Cutblocks**
 - Future Harvest
 - Harvested
 - In Progress
 - Planned 2022-2023
 - Reforested
 - Contingency 2021 - 2022
 - Retention
- Wildlife Sensitivity Zones**
 - Key Wildlife And Biodiversity
 - Mountain Goat And Sheep Areas
- Grizzly Bear Zone**
 - Core
 - Secondary
- Hydrography**
 - Major Hydrography
 - Minor Hydrography
 - Ephemeral
 - Intermittent
 - Transitional
 - Small Permanent
 - Large Permanent
 - Riparian Buffers
- Installations**
 - Planned**
 - Bridge
 - Box Crib
 - Half Pipe
 - Culvert
 - Pipeline
 - Gate
 - Active**
 - Bridge
 - Box Crib
 - Half Pipe
 - Culvert
 - Pipeline
- Landuse**
 - PSP
 - PNT
 - Wildland Park
 - Provincial Recreation Area
 - Ecological Reserve
 - Heritage Rangeland
 - Natural Area
 - Grazing Allotments
 - Grazing Leases
 - Traps
 - CS Licenses 2020
- Point of Interest**
 - Water
 - Wildlife



1:20,000

Map Title: AOP 2021 - 2022 C2L26
Created By: Spray Lake Sawmills (1980) Ltd.
Date Created: May 13, 2021
Author: Kalina Velez, RPF

Any use or duplication without permission is prohibited. This map was developed with available information and Spray Lake Sawmills (1980) Ltd. makes no warranty for the accuracy or completeness of this map.