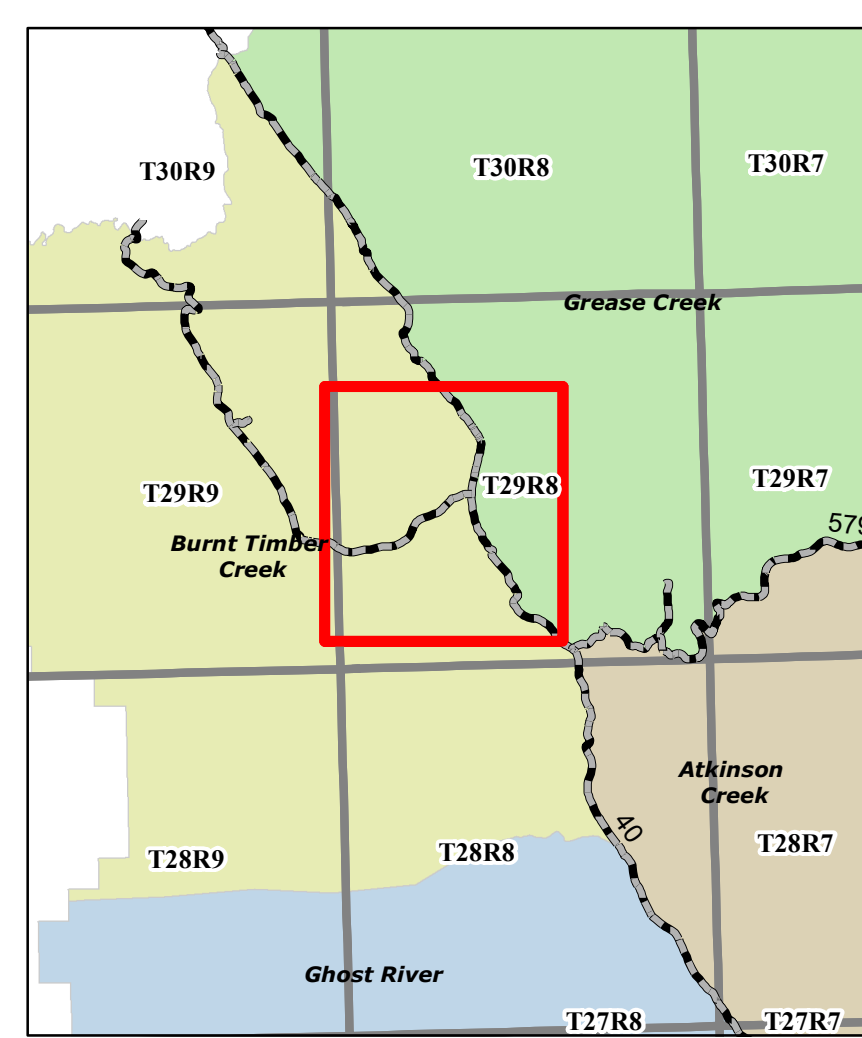
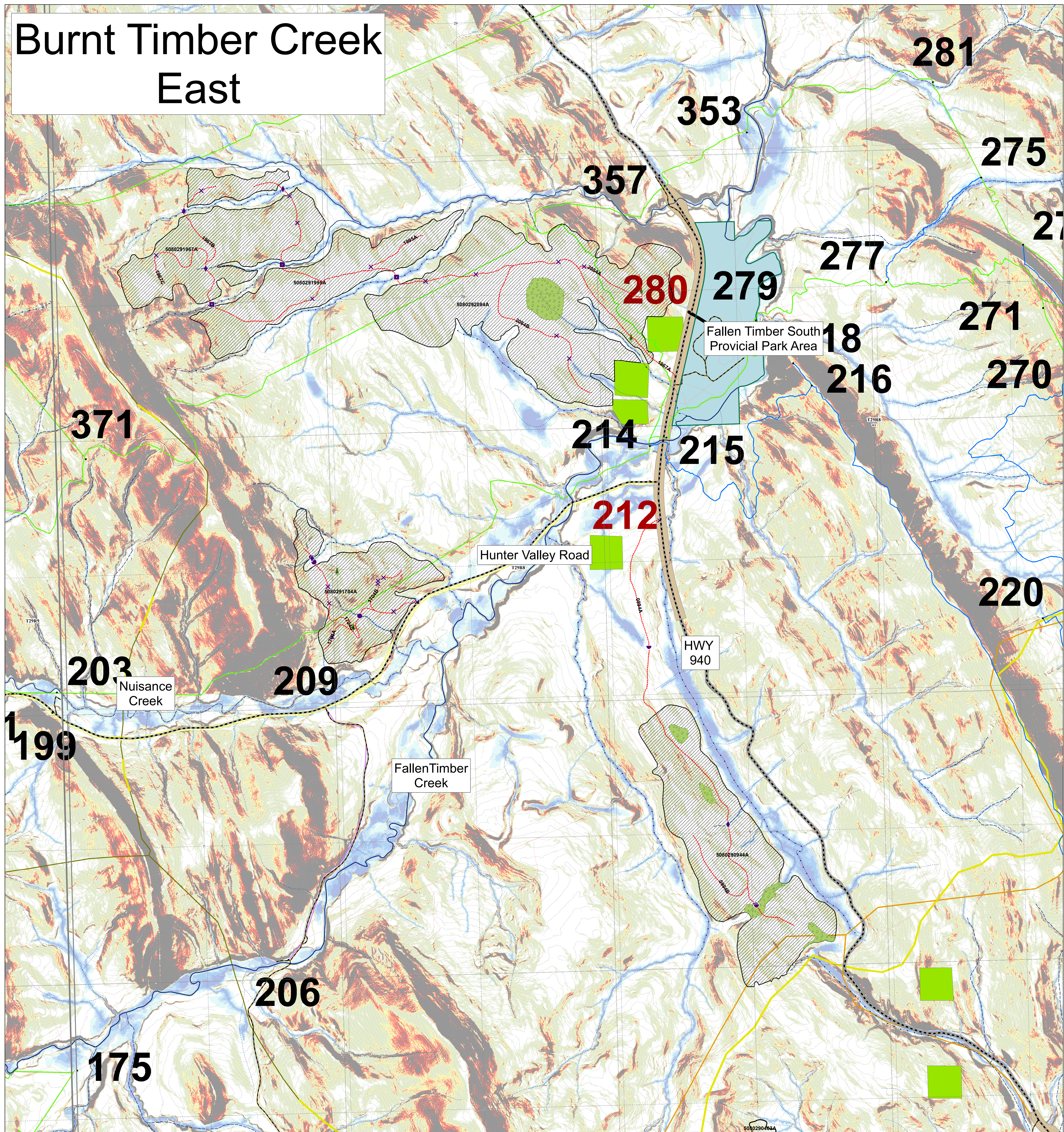


Burnt Timber Creek East



FMA & B9 Transportation - Transportation - Road - Paved - Road - Gravel - Truck Trail - Cutline/Trail - Railway - Other Trails	Hydrography - Hydrography - Ephemeral - Intermittent - Transitional - Small Permanent - Large Permanent Points of Interest - Cultural - Grazing; Grazing - Recreation - Vegetation - Water - Wildlife	Cutblocks - Harvested, Complete - In Progress - Laid Out - Preliminary - Reforested - Retention Roads - Planned - Laid Out - Constructed - Reclaimed - Total - Reclaimed - Partial - Reclaimed - Seasonal	Planned Watercourse Crossings - Bridge - Box Crib - Half Pipe Planned In Stream Crossings - Cordoury - Logfill - Culvert - X Drain Active Watercourse Crossings - Bridge - Box Crib - Half Pipe Active In Stream Crossings - Culvert - Cordoury - Logfill - X Drain	Stakeholder Landuse - License of Occupation - Mineral Surface Lease - Pipeline Agreement - Easement - Country Road - Surface Mineral Lease - Vegetation Control Easement - TP&R Easement - TP&R License of Occupation - Parks Mineral Surface Lease	- Roadway - Surface Material Lease - Rural Electrification Association Easement - Right-of-Entry Agreement - Forestry Road - Misc. Permit - Pipeline Installation Lease - Parks Mineral Surface Lease	Parks and Reserves - Provincial Rec Area - PNT - Heritage Rangeland - Ecological Reserve - Natural Area - Wilderness Area - Wildland Provincial Park - National Park Designated Trails - Truck Trail (4x4) - Quad - Single Track - KC Trails
--	--	--	--	--	--	---

1:8,000

0 0.15 0.3 0.6 0.9 1.2
Kilometers

Map Title: 2021_Open_House
 Created By: Spray Lake Sawmills (1980) Ltd
 Date Created: April 20, 2021
 Author: Allen Mottet, RPF

Any duplication or distribution without permission is prohibited.
 This map was created using available information and Spray Lake Sawmills (1980) Ltd makes no warranty for the accuracy or completeness of this map.