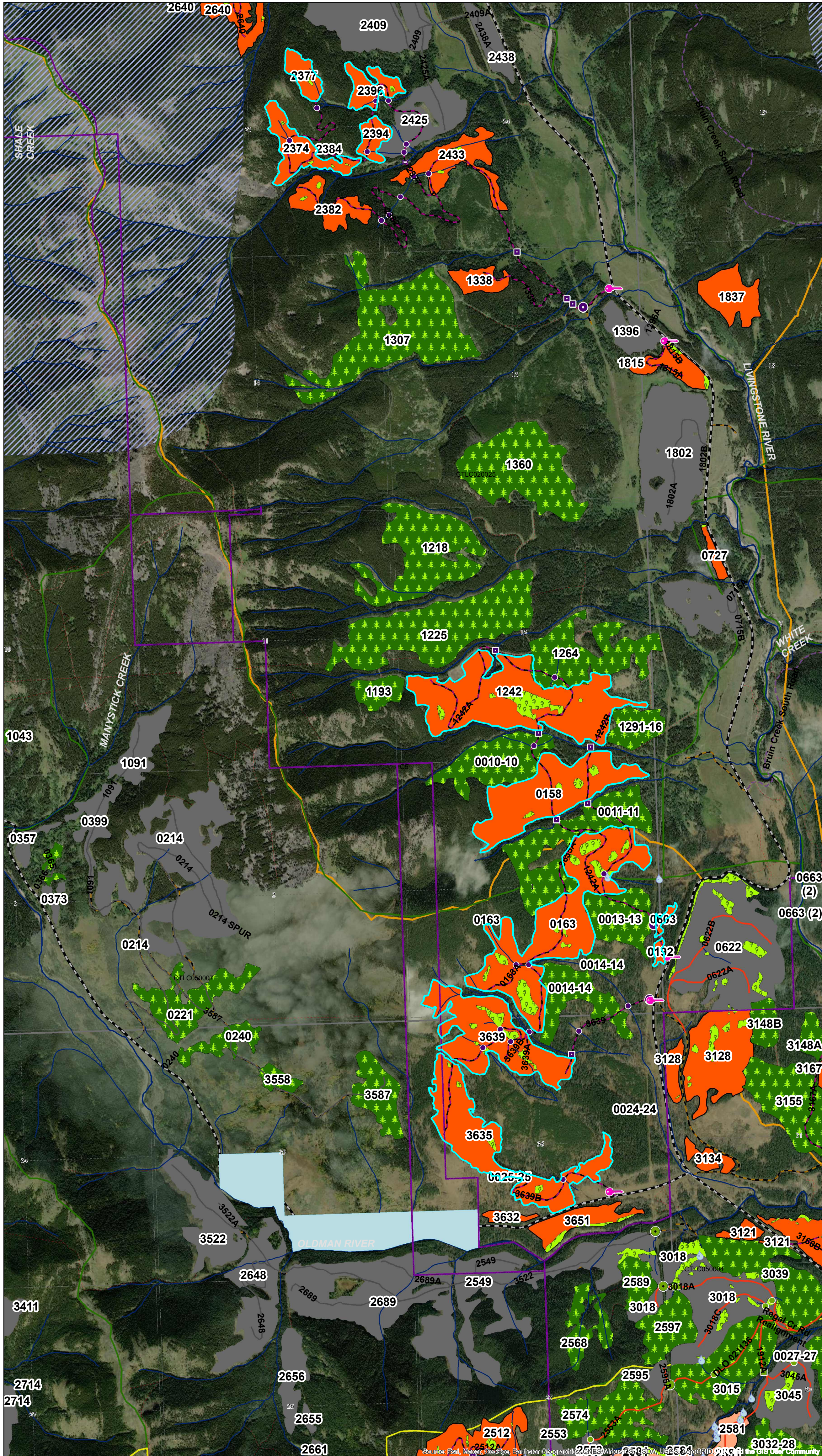




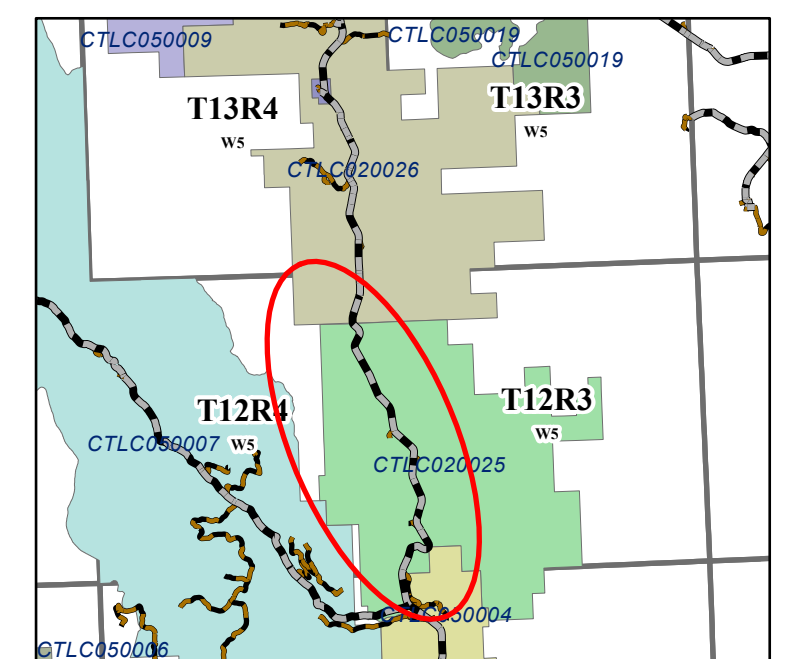
Spray Lake Sawmills

CTLC020025 Lower Livingstone Annual Operating Plan 2021 - 2022



Legend

- Transportation**
 - Road - Paved
 - Road - Gravel
 - Truck Trail
 - Cutline/Trail
- SLS Roads**
 - Laid Out
 - Constructed
 - Reclaimed - Total
- Cutblocks**
 - Future Harvest
 - Harvested
 - In Progress
 - Planned 2021 - 2022
 - Reforested
 - Contingency 2021 - 2022
 - Retention
- Wildlife Sensitivity Zones**
 - Key Wildlife And Biodiversity
 - Mountain Goat And Sheep Areas
- Grizzly Bear Zone**
 - Core
 - Secondary
- Hydrography**
 - Major Hydrography
 - Minor Hydrography
 - Ephemeral
 - Intermittent
 - Transitional
 - Small Permanent
 - Large Permanent
 - Riparian Buffers
- Installations**
 - Planned**
 - Bridge
 - Box Crib
 - Half Pipe
 - Culvert
 - Pipeline
 - Gate
 - Active**
 - Bridge
 - Box Crib
 - Half Pipe
 - Culvert
 - Pipeline
- Landuse**
 - PSP
 - PNT
 - Wildland Park
 - Provincial Recreation Area
 - Ecological Reserve
 - Heritage Rangeland
 - Natural Area
 - Grazing Allotments
 - Grazing Leases
 - Traplins
 - CS Licenses 2020
- Point of Interest**
 - Water
 - Wildlife



0.45 0.225 0 0.45 Kilometers

1:15,000

Map Title: AOP 2021 - 2022 C2L25
Created By: Spray Lake Sawmills (1980) Ltd.
Date Created: May 13, 2021
Author: Kalina Velez, RPF

Any use or duplication without permission is prohibited.
This map was developed with available information and
Spray Lake Sawmills (1980) Ltd. makes no warranty for
the accuracy or completeness of this map.